



PKA γ cat Polyclonal Antibody

Catalog No	YP-Ab-14930
Isotype	IgG
Reactivity	Human;Rat;Mouse;
Applications	WB;IHC;IF;ELISA
Gene Name	PRKACG
Protein Name	cAMP-dependent protein kinase catalytic subunit gamma
Immunogen	The antiserum was produced against synthesized peptide derived from human KAPCG. AA range:1-50
Specificity	PKA γ cat Polyclonal Antibody detects endogenous levels of PKA γ cat protein.
Formulation	Liquid in PBS containing 50% glycerol, 0.5% BSA and 0.02% sodium azide.
Source	Polyclonal, Rabbit,IgG
Purification	The antibody was affinity-purified from rabbit antiserum by affinity-chromatography using epitope-specific immunogen.
Dilution	WB: 1/500 - 1/2000. IHC: 1/100 - 1/300. ELISA: 1/10000.. IF 1:50-200
Concentration	1 mg/ml
Purity	≥90%
Storage Stability	-20°C/1 year
Synonyms	PRKACG; cAMP-dependent protein kinase catalytic subunit gamma; PKA C-gamma
Observed Band	40kD
Cell Pathway	nucleoplasm,cytosol,ciliary base,
Tissue Specificity	Testis specific. But important tissues such as brain and ovary have not been analyzed for the content of transcript.
Function	catalytic activity:ATP + a protein = ADP + a phosphoprotein.,enzyme regulation:Activated by cAMP.,function:Phosphorylates a large number of substrates in the cytoplasm and the nucleus.,similarity:Belongs to the protein kinase superfamily. AGC Ser/Thr protein kinase family. cAMP subfamily.,similarity:Contains 1 AGC-kinase C-terminal domain.,similarity:Contains 1 protein kinase domain.,subunit:A number of inactive tetrameric holoenzymes are produced by the combination of homo- or heterodimers of the different regulatory subunits associated with two catalytic subunits. cAMP causes the dissociation of the inactive holoenzyme into a dimer of regulatory subunits bound to four cAMP and two free monomeric catalytic subunits.,tissue specificity:Testis specific. But important tissues such as brain and ovary have not been analyzed for the content of transcript.,



Background

Cyclic AMP-dependent protein kinase (PKA) consists of two catalytic subunits and a regulatory subunit dimer. This gene encodes the gamma form of its catalytic subunit. The gene is intronless and is thought to be a retrotransposon derived from the gene for the alpha form of the PKA catalytic subunit. [provided by RefSeq, Jul 2008],

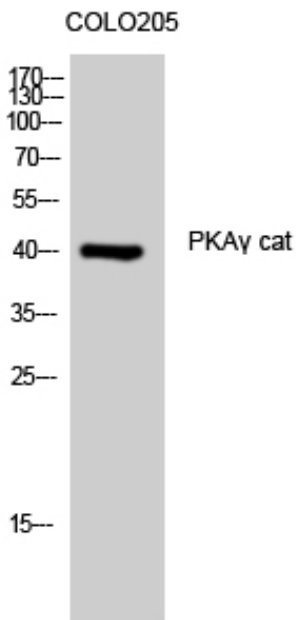
matters needing attention

Avoid repeated freezing and thawing!

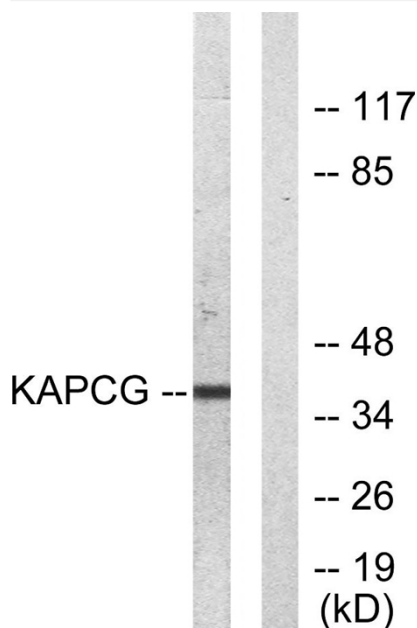
Usage suggestions

This product can be used in immunological reaction related experiments. For more information, please consult technical personnel.

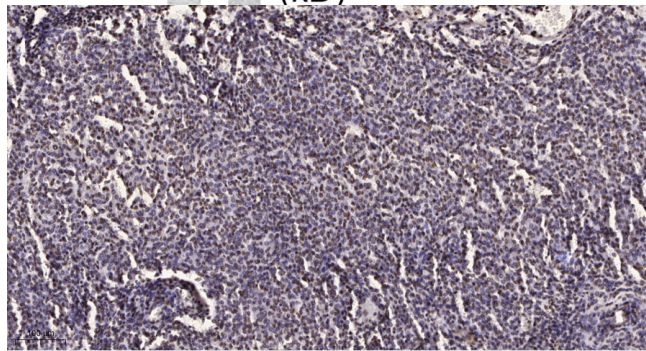
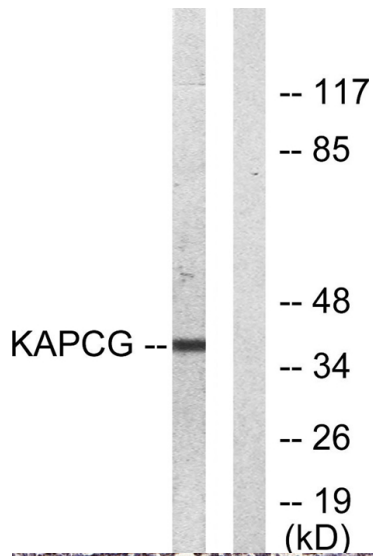
Products Images



Western Blot analysis of COLO205 cells using PKAγ cat Polyclonal Antibody



Western blot analysis of lysates from COLO205 cells, using KAPCG Antibody. The lane on the right is blocked with the synthesized peptide.



Immunohistochemical analysis of paraffin-embedded human brain tumor. 1, Antibody was diluted at 1:200(4° overnight). 2, Tris-EDTA,pH9.0 was used for antigen retrieval. 3,Secondary antibody was diluted at 1:200(room temperature, 45min).